



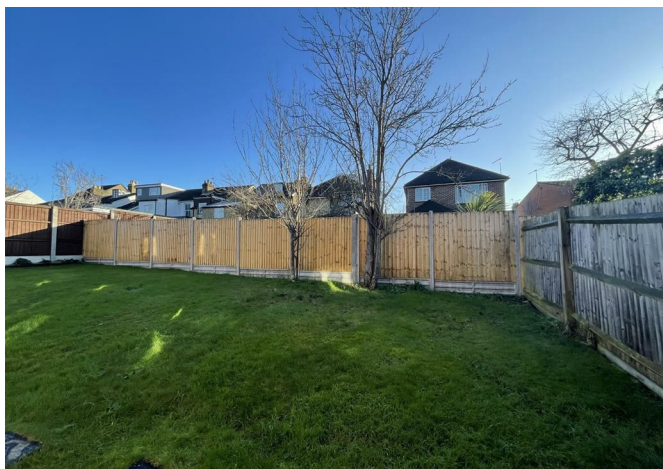


**ALLDAY  
& MILLER**



Iffley Close, Uxbridge, UB8 1TS  
£1,700

 2  2  1 



## Iffley Close, Uxbridge, UB8 1TS

**£1,700**

- Ground Floor Maisonette
- Two Bathrooms
- Open Plan Modern Kitchen
- Allocated Off Street Parking Space
- Two Bedrooms
- Wood Flooring Throughout
- Direct Access to a Well Maintained Communal Garden
- Less than a 2 Minute Walk From Uxbridge Station

## Description

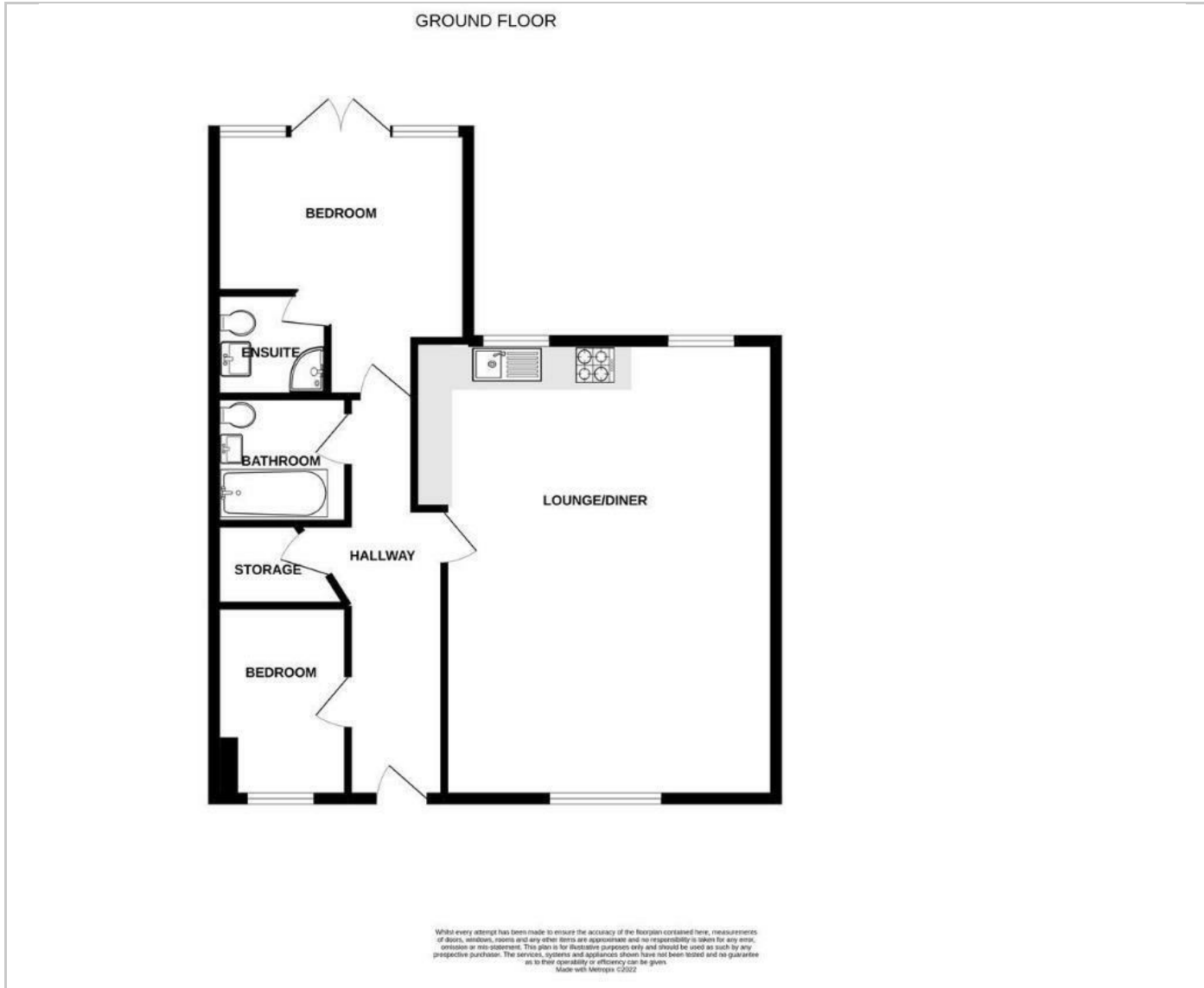
This delightful apartment boasts a modern and spacious open-plan kitchen, perfect for both cooking and entertaining. The property features a well-appointed master bedroom with an ensuite bathroom. This bedroom also benefits from double doors that open directly onto a lovely communal garden. The second bedroom is also generously sized, making it ideal for guests, a home office, or a growing family.

## Situation

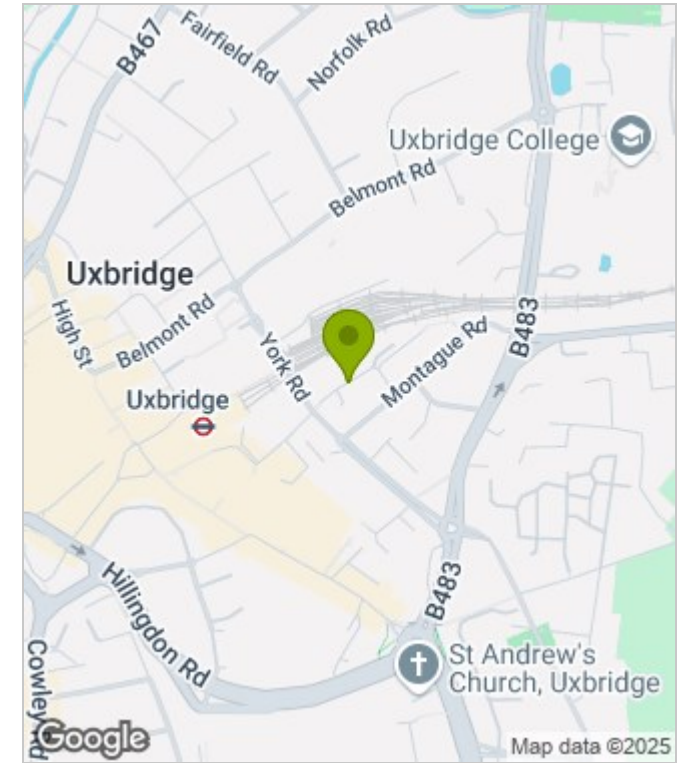
Iffley Close is situated off Montague Road in the heart of the Town Centre and within very easy reach of the multiple shopping facilities, restaurants and bars and the Metropolitan/Piccadilly Line Tube Station.



## Floor Plans



## Area Map



## Energy Performance Graph



These particulars, whilst believed to be accurate are set out as a general outline only for guidance and do not constitute any part of an offer or contract. Intending purchasers should not rely on them as statements of representation of fact, but must satisfy themselves by inspection or otherwise as to their accuracy. No person in this firm's employment has the authority to make or give any representation or warranty in respect of the property.